

F25MF



FLAT SUCTION CUP WITH CLEATS, MARK FREE

- ▶ Suction cup of TPU, a mark free material that leaves no trace on the object being handled.
- ▶ Suitable for flat surfaces.
- ▶ Good stability and little inherent movement.
- ▶ Recommended when the lifting force is parallel to the surface of the object.

LIFTING FORCES & TECHNICAL DATA

Lifting force vertical to the surface, N, at vacuum level			Lifting force parallel to the surface, N, at vacuum level			Volume cm ³	Min. curve radius mm	Max. vertical movement mm	Weight rubber part g
20 -kPa	60 -kPa	90 -kPa	20 -kPa	60 -kPa	90 -kPa				
6.3	24.5	35.5	9.0	24.5	36.3	1.1	23	1.5	1.7

MATERIAL SPECIFICATIONS

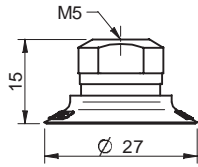
Material	Colour	Hardness °Shore A	Temperature range °C
Thermoelastic polyurethane, TPU	Transparent white	81	-20-80

MATERIAL RESISTANCE

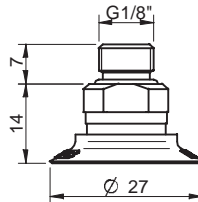
Wear resistance	Oil	Weather & Ozone	Hydrolysis	Petrol	Concentrated acids	Alcohol	Oxidation
Excellent	Excellent	Excellent	Poor	Poor	Poor	Good	Good

ORDERING INFORMATION

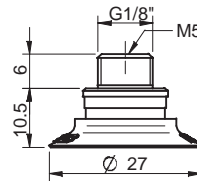
Complete suction cups		Art. No.
A	Suction cup F25MF Thermoelastic polyurethane, M5 female	0101314
A	Suction cup F25MF Thermoelastic polyurethane, M5 female, with dual flow control valve	0101320
B	Suction cup F25MF Thermoelastic polyurethane, G1/8" male, with mesh filter	0101315
B	Suction cup F25MF Thermoelastic polyurethane, G1/8" male, with mesh filter and dual flow control valve	0101321
C	Suction cup F25MF Thermoelastic polyurethane, G1/8" male/M5 female, with mesh filter	0101319
D	Suction cup F25MF Thermoelastic polyurethane, 5xM5 female	0101318



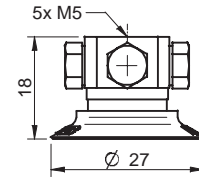
A



B

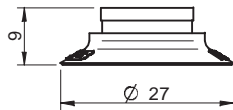


C



D

Rubber parts		Art. No.
Suction cup F25MF Thermoelastic polyurethane		0101140



Fittings		Art. No.
Fitting M5 female		3250003
Fitting M5 female, with dual flow control valve		3251001
Fitting G1/8" male, with mesh filter		3250085
Fitting G1/8" male, with mesh filter and dual flow control valve		3251002
Fitting G1/8" male/M5 female, with mesh filter		0101152
Fitting G1/8" male/M5 female, with dual flow control valve		3251004
Fitting 5xM5 female		0100260
Fitting 5xM5 female, with dual flow control valve		3251005
Fitting G1/8" male/M5 female, PA		3150196

For further information and dimensioned drawings, see *SUCTION CUPS FITTINGS* chapter.